

**HILTON GARDEN INN – ISTANBUL GOLDEN HORN
HOTEL PROJECT, LEED CERTIFICATION PROCESS**



URBAN PLANNER, ARCHITECT – NADİN DEMİRCİOĞLU

LOCATION



LOCATION



HILTON GARDEN INN - GOLDEN HORN // ISTANBUL - TURKEY

Targetted LEED Silver



SCORECARD

LEED-NC v3.0 Preliminary Project Checklist
 AMPLO HOTEL INVESTMENTS
HILTON GARDEN INN - GOLDEN HORN
 ISTANBUL TURKEY

56	11	0	Project Totals (pre-certification estimates)	110 Points
<small>1-49 points: Certified 40-49 points Silver 50-59 points Gold 60-79 points Platinum 80-110 points</small>				

Req.	Y	N	NA	Points
22 3 1 Sustainable Sites 14 Points				
Prereq 1	Y			Required
Credit 1	1			1 to 3
Credit 2	5			1
Credit 3				1 to 2
Credit 4.1				1 to 2
Credit 4.2	1			1 to 2
Credit 4.3	3			1 to 2
Credit 4.4	2			1
Credit 5	1			1
Credit 5.2	1			1
Credit 6.1	1			1
Credit 6.2	1			1
Credit 7.1	1			1
Credit 7.2	1			1
Credit 8	1			1

Reducing carbon emission by applying all alternatif transportation credits.

All LEED points are appropriate for HGI – Golden Horn.

Req.	Y	N	NA	Points
8 2 Water Efficiency 5 Points				
Prereq 1	Y			Required
Credit 1	2			2 to 4
Credit 2	2			2
Credit 3	4			2 to 4

Req.	Y	N	NA	Points
10 2 23 Energy & Atmosphere 35 Points				
Prereq 1	Y			Required
Prereq 2	Y			Required
Prereq 3	Y			Required
Credit 1	5	2		1 to 19
Credit 2				1 to 7
Credit 3				2
Credit 4				2
Credit 5	1			3
Credit 6				2

Measurement & Verification of energy will be easily provided by automated BMS.

Req.	Y	N	NA	Points
4 1 9 Materials & Resources 14 Points				
Prereq 1	Y			Required
Credit 1.1				1 to 3
Credit 1.2				1
Credit 2				1 to 2
Credit 3				1 to 2
Credit 4	2			1 to 2
Credit 5	1			1 to 2
Credit 6				1
Credit 7				1

Using regional materials within 800 km LEED points can be easily achieved.

Req.	Y	N	NA	Points
10 3 2 Indoor Environmental Quality 15 Points				
Prereq 1	Y			Required
Prereq 2	Y			Required
Credit 1	1			1
Credit 2				1
Credit 3.1	1			1
Credit 3.2	1			1
Credit 4.1	1			1
Credit 4.2	1			1
Credit 4.3	1			1
Credit 4.4	1			1
Credit 5	1			1
Credit 6.1	1			1
Credit 6.2	1			1
Credit 7.1	1			1
Credit 7.2	1			1
Credit 8.1	1			1
Credit 8.2	1			1

Most of indoor environmental quality credits can be achieved in our project.

Req.	Y	N	NA	Points
2 2 Innovation & Design Process 6 Points				
Credit 1.1	1			1
Credit 1.2	1			1
Credit 1.3	1			1
Credit 1.4	1			1
Credit 1.5	1			1
Credit 2				1

Req.	Y	N	NA	Points
Regional Priority 4 Points				
Credit 1.1				1
Credit 1.2				1
Credit 1.3				1
Credit 1.4				1

SUSTAINABLE SITES

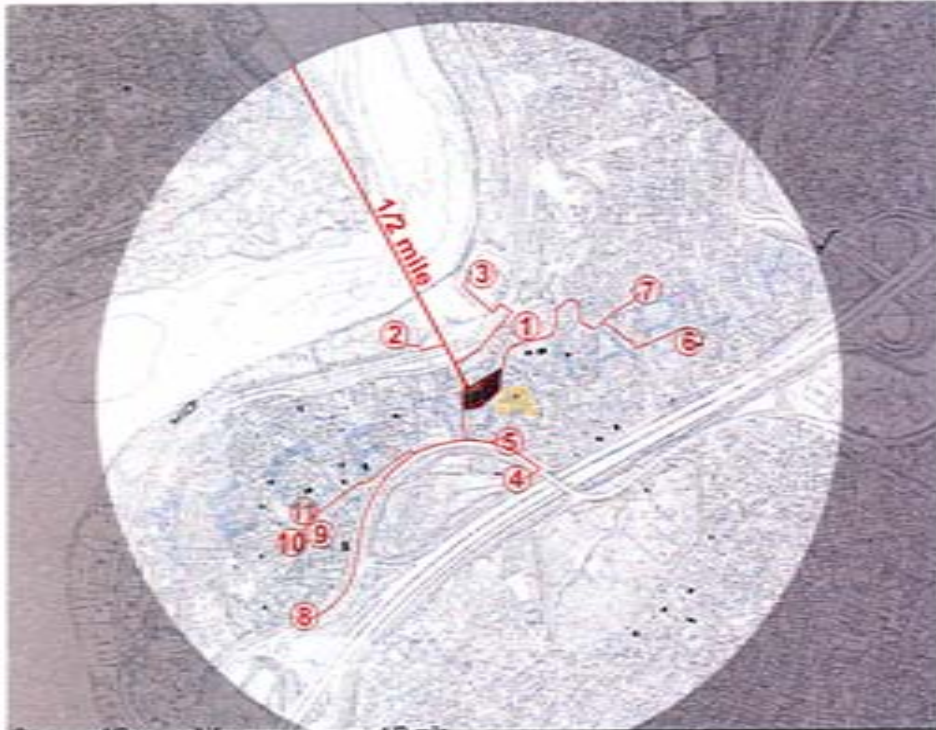
22	3	1	Sustainable Sites	28 Points
Y			Prereq 1 Construction Activity Pollution Prevention	Required
1			Credit 1 Site Selection	1
5			Credit 2 Development Density & Community Connectivity	5
			Credit 3 Brownfield Redevelopment	1
6			Credit 4.1 Alternative Transportation, Public Transportation Access	6
1			Credit 4.2 Alternative Transportation, Bicycle Storage & Changing Rooms	1
3			Credit 4.3 Alternative Transportation, Low-Emitting and Fuel-Efficient Vehicles	3
2			Credit 4.4 Alternative Transportation, Parking Capacity	2
	1		Credit 5.1 Site Development, Protect or Restore Habitat	1
	1		Credit 5.2 Site Development, Maximize Open Space	1
		1	Credit 6.1 Stormwater Design, Quantity Control	1
		1	Credit 6.2 Stormwater Design, Quality Control	1
		1	Credit 7.1 Heat Island Effect, Non-Roof	1
		1	Credit 7.2 Heat Island Effect, Roof	1
		1	Credit 8 Light Pollution Reduction	1



Protection around menhole

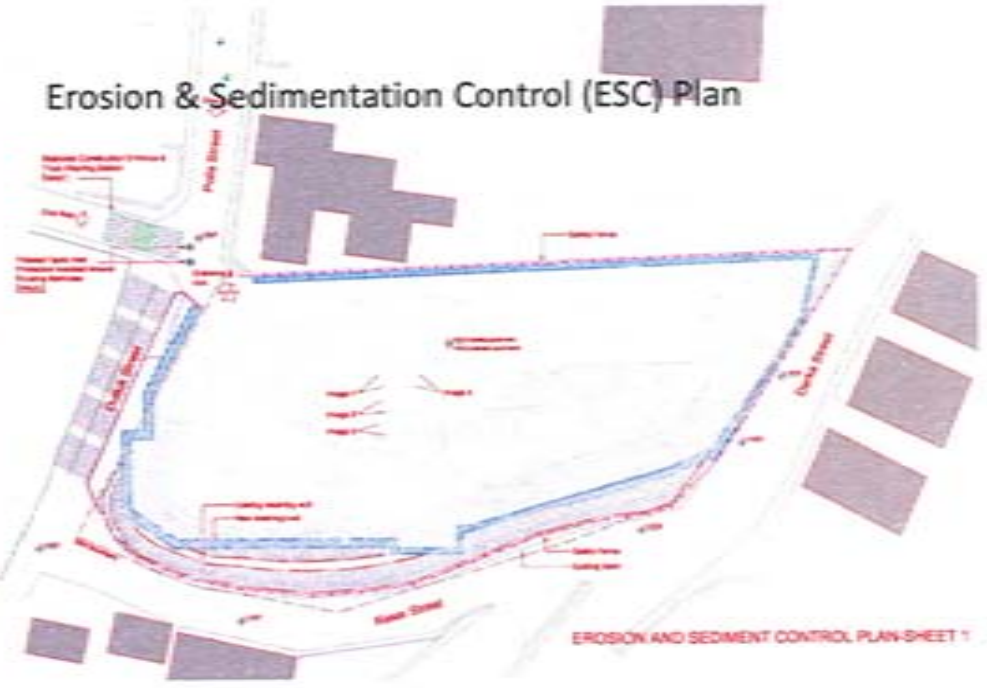


Truck washing station



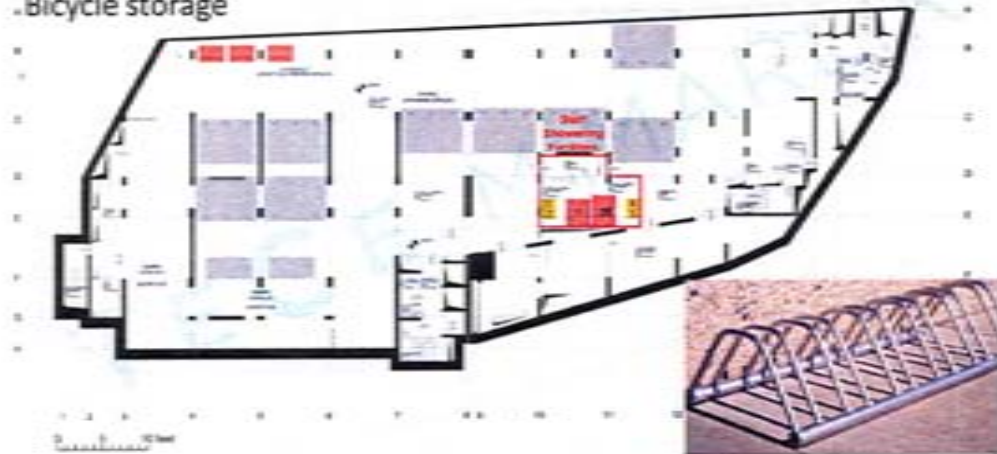
Service Identification	Business Name	Service Type
1	Istanbul Anatolia Highschool	School
2	Halic Park	Park
3	Miniaturk (Open Air Museum)	Museum
4	Church	Place of Worship
5	Mosque	Place of Worship
6	Sutluce Health Care Center	Medical Office
7	Kardeşler Market	Grocery
8	Garanti Bankası ATM	Bank
9	Nihal Eczanesi	Pharmacy
10	Arzu Kuaför	Beauty Salon
11	Bademlik Yapı	Hardware

Erosion & Sedimentation Control (ESC) Plan

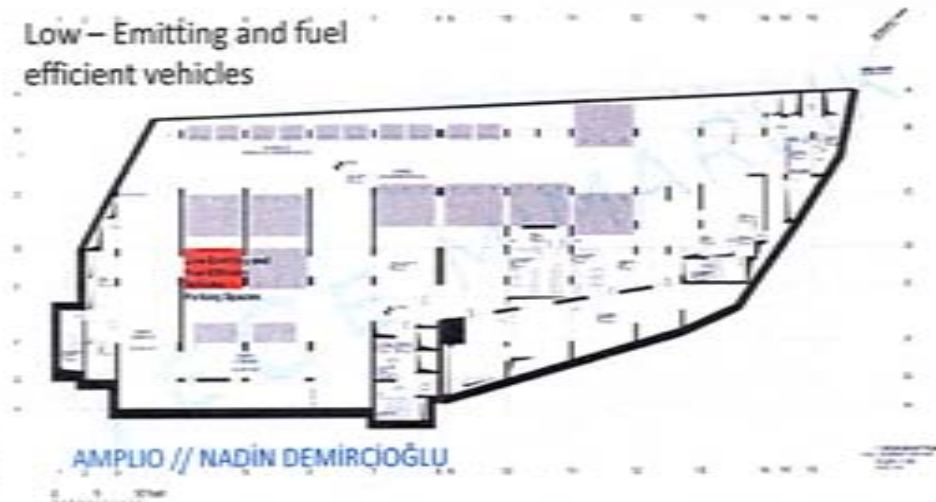


22	3	1	Sustainable Sites	25 Points
Y			Prereq 1 Construction Activity Pollution Prevention	Required
1			Credit 1 Site Selection	1
5			Credit 2 Development Density & Community Connectivity	5
			Credit 3 Brownfield Redevelopment	1
6			Credit 4.1 Alternative Transportation, Public Transportation Access	6
1			Credit 4.2 Alternative Transportation, Bicycle Storage & Changing Rooms	1
3			Credit 4.3 Alternative Transportation, Low-Emitting and Fuel-Efficient Vehicles	3
2			Credit 4.4 Alternative Transportation, Parking Capacity	2
	1		Credit 5.1 Site Development, Protect or Restore Habitat	1
			Credit 5.2 Site Development, Maximize Open Space	1
	1		Credit 6.1 Stormwater Design, Quantity Control	1
			Credit 6.2 Stormwater Design, Quality Control	1
			Credit 7.1 Heat Island Effect, Non-Roof	1
			Credit 7.2 Heat Island Effect, Roof	1
			Credit 8 Light Pollution Reduction	1

Bicycle storage



Low-Emitting and fuel efficient vehicles

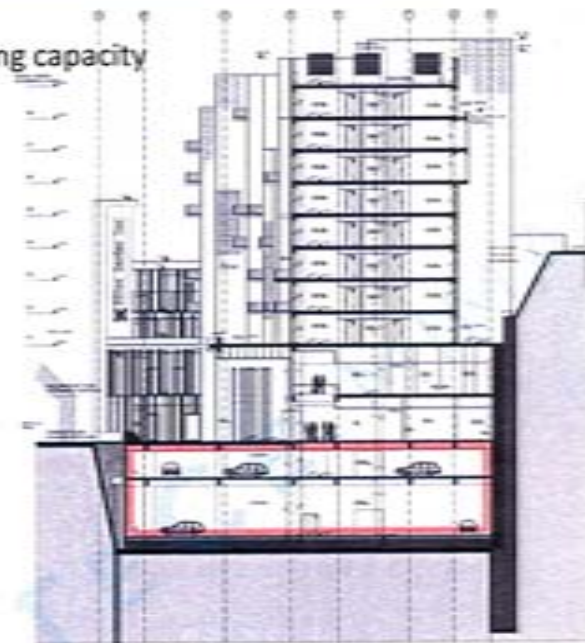


SUSTAINABLE SITES

Public transportation access



Parking capacity



HILTON GARDEN INN – GOLDEN HORN // ISTANBUL – TURKEY

8	2	Water Efficiency	10 Points
Y		Prereq 1 Water Use Reduction, 20% Reduction	Required
2		Credit 1 Water Efficient Landscaping	2 to 4
2		Credit 2 Innovative Wastewater Technologies	2
4		Credit 3 Water Use Reduction	2 to 4

LEED category		Suggested products	Potential points
Water efficiency (WE)	Water use reduction	2.5/4 L WC pans* 1.6 L WC pans* Waterfree urinal Siphonic WC pans*	1-4 1-4 1-4 1-4
	Innovative wastewater technologies	2.5/4 L WC pans* 1.6 L WC pans* Waterfree urinal*	1-4 1-4 1-4
Materials and Resources (MR)	Regional materials**	2.5/4 L WC pans* 1.6 L WC pans* Waterfree urinal Siphonic WC pans*	1-4 1-4 1-4 1-4
Innovation in design (ID)	Innovation in design***	2.5/4 L WC pans* 1.6 L WC pans* Waterfree urinal	1-4

- * For 2.5 L WC pans, 2.5/4 L systems should be used. 1.6 L systems are not sufficient in this case. Please refer to our website for detailed information.
 ** Provided for domestic market and/or near markets.
 *** Water usage and design and 2.5/4 L technology is considered.



2.5 / 4 lt. Dual Flush

AMPLIO // NADİN DEMİRCİOĞLU

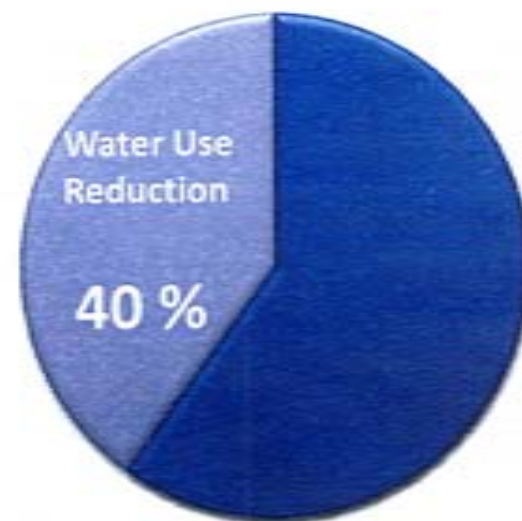


Faucets with photocell



Waterless Urinals

WATER EFFICIENCY



ENERGY & ATMOSPHERE

10	2	23	Energy & Atmosphere	36 Points
Y			Prereq 1 Fundamental Commissioning of the Building Energy Systems	Required
Y			Prereq 2 Minimum Energy Performance	Required
Y			Prereq 3 Fundamental Refrigerant Management	Required
5	2	13	Cred 1 Optimize Energy Performance	1 to 15
			Cred 2 On-Site Renewable Energy	1 to 7
			Cred 3 Enhanced Commissioning	2
2			Cred 4 Enhanced Refrigerant Management	2
3			Cred 5 Measurement & Verification	3
			Cred 6 Green Power	2



Minimum Energy Performance



Fundamental Refrigerant Management



Optimize Energy Performance

MATERIALS & RESOURCES

4	1	9	Materials & Resources	14 Points
Y			Prereq 1 Storage & Collection of Recyclables	Required
			Credit 1.1 Building Reuse, Maintain Existing Walls, Floors & Roof	1 to 3
			Credit 1.2 Building Reuse, Maintain 50% of Interior Non-Structural Elements	1
	1		Credit 2 Construction Waste Management	1 to 2
			Credit 3 Materials Reuse	1 to 2
2			Credit 4 Recycled Content	1 to 2
2			Credit 5 Regional Materials	1 to 2
			Credit 6 Rapidly Renewable Materials	1
			Credit 7 Certified Wood	1



Recycling bins for;
 paper
 glass
 plastics
 metals



Using regional materials



Recycled content

10	3	2	Indoor Environmental Quality	15 Points
Y			Prereq 1 Minimum IAQ Performance	Required
Y			Prereq 2 Environmental Tobacco Smoke (ETS) Control	Required
1			Credit 1 Outdoor Air Delivery Monitoring	1
1			Credit 2 Increased Ventilation	1
	1		Credit 3.1 Construction IAQ Management Plan, During Construction	1
		1	Credit 3.2 Construction IAQ Management Plan, Before Occupancy	1
1			Credit 4.1 Low-Emitting Materials, Adhesives & Sealants	1
1			Credit 4.2 Low-Emitting Materials, Paints & Coatings	1
	1		Credit 4.3 Low-Emitting Materials, Flooring Systems	1
		1	Credit 4.4 Low-Emitting Materials, Composite Wood & Agrifiber Products	1
1			Credit 5 Indoor Chemical & Pollutant Source Control	1
1			Credit 6.1 Controllability of Systems, Lighting	1
1			Credit 6.2 Controllability of Systems, Thermal Comfort	1
1			Credit 7.1 Thermal Comfort, Design	1
1			Credit 7.2 Thermal Comfort, Verification	1
	1		Credit 8.1 Daylight & Views, Daylight 75% of Spaces	1
1			Credit 8.2 Daylight & Views, Views for 90% of Spaces	1

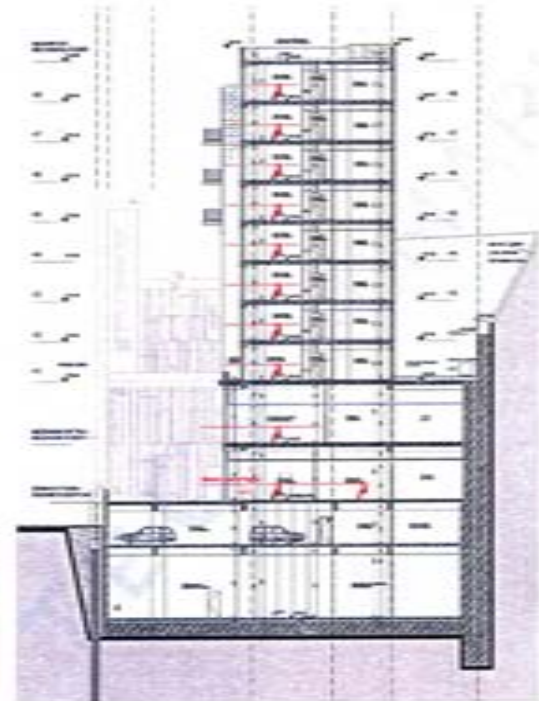
INDOOR ENVIRONMENTAL QUALITY



NO SMOKING
IT IS AGAINST THE
LAW TO SMOKE IN
THESE PREMISES



Daylight & Views



Minimum IAQ
Performance

Environmental Tobacco
Smoke Control

Controllability of Systems



Law - Emitting Materials

SUMMARY

- # Reduced energy usage.
- # Reduce resource consumption and less waste.
- # Improved indoor environment.
- # Process ensures a verified high performance building.
- # Marketing value.
- # Demonstrates sustainable leadership.

LEED is more than a plaque on the wall.

Thank you for your attention...

For more information;

Nadin Demircioğlu

ndemircioglu@amplio.com.tr

www.amplio.com.tr